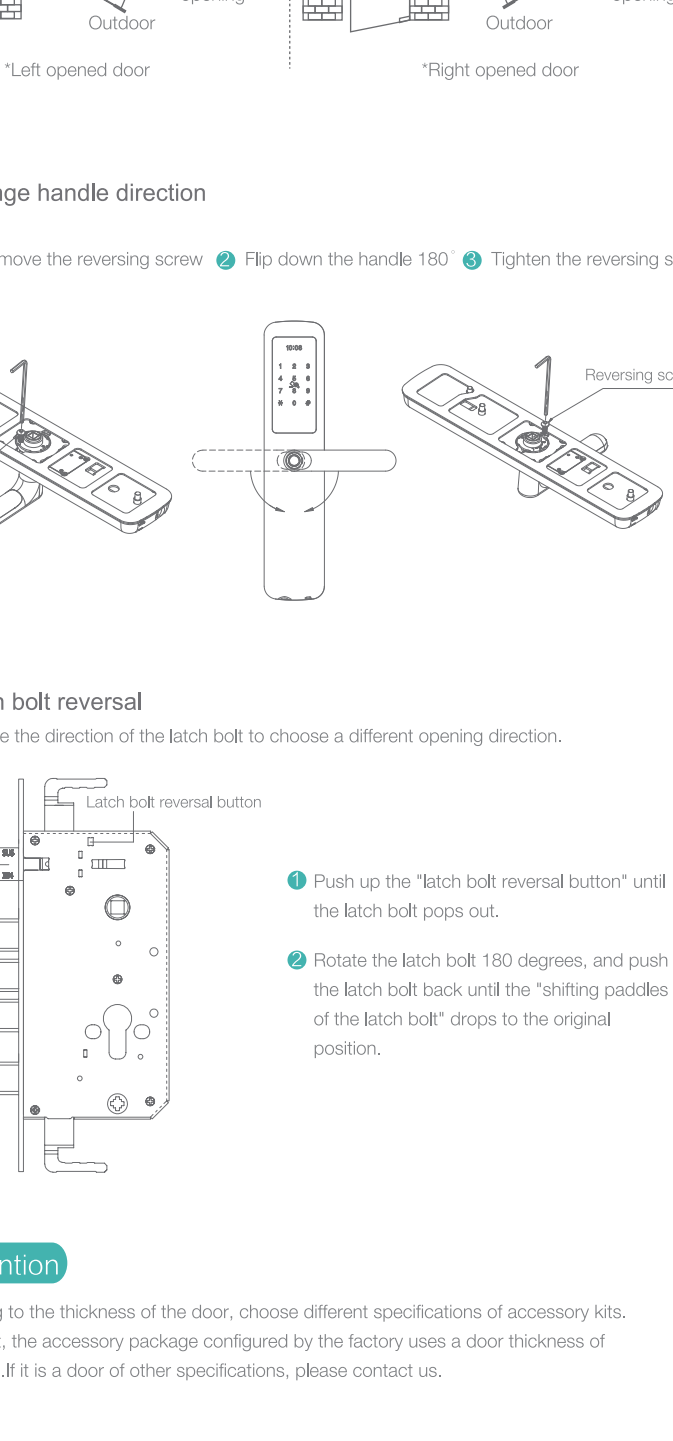


## User manual & Warranty content

### 1 Usage notice & components

Smart lock J21 is an anti-theft lock specially designed for high-end homes and belongs to security equipment in smart home system. Support fingerprint, password, card, mechanical key and remote five-in-one unlocking methods to meet the usage habits of different users. The integrated electronic lock cylinder requires a mechanical key with fingerprint, password or RF card to open the door mechanically, adding a layer of security protection. At the same time, with the "Korike Home Center" and the App management system, users can receive notifications of abnormal conditions and view door opening records.



#### Attention

The pictures used in the installation instructions are for reference only, and the product is subject to the actual product.

### 2 Product list/Parameter /Installation exploded views

Please check carefully according to the following list after unpacking the packing box. If you find any omissions, please ask for it from our company or our agent in time.

#### Product list

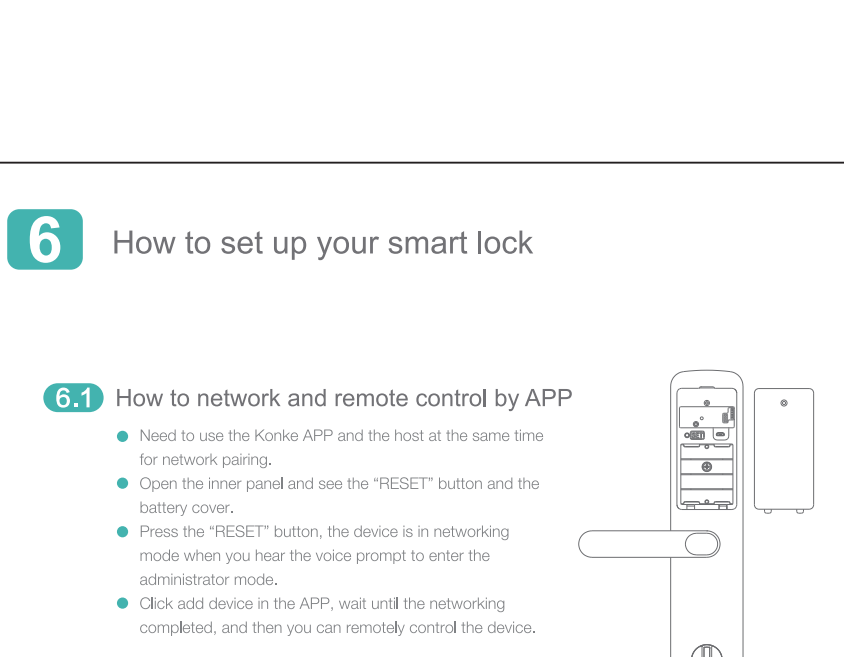
Number	Name	Quantity
1	Outer panel components	1
2	Inner panel components	1
3	Lock body	1
4	Install accessory kit	1
5	User manual	1
6	Scouring pad	1
7	Hole module	1
8	Key box	1
9	User card	1
10	Stake gasket	1
11	Side buckle box	1
12	Battery pack	1

#### Product parameter

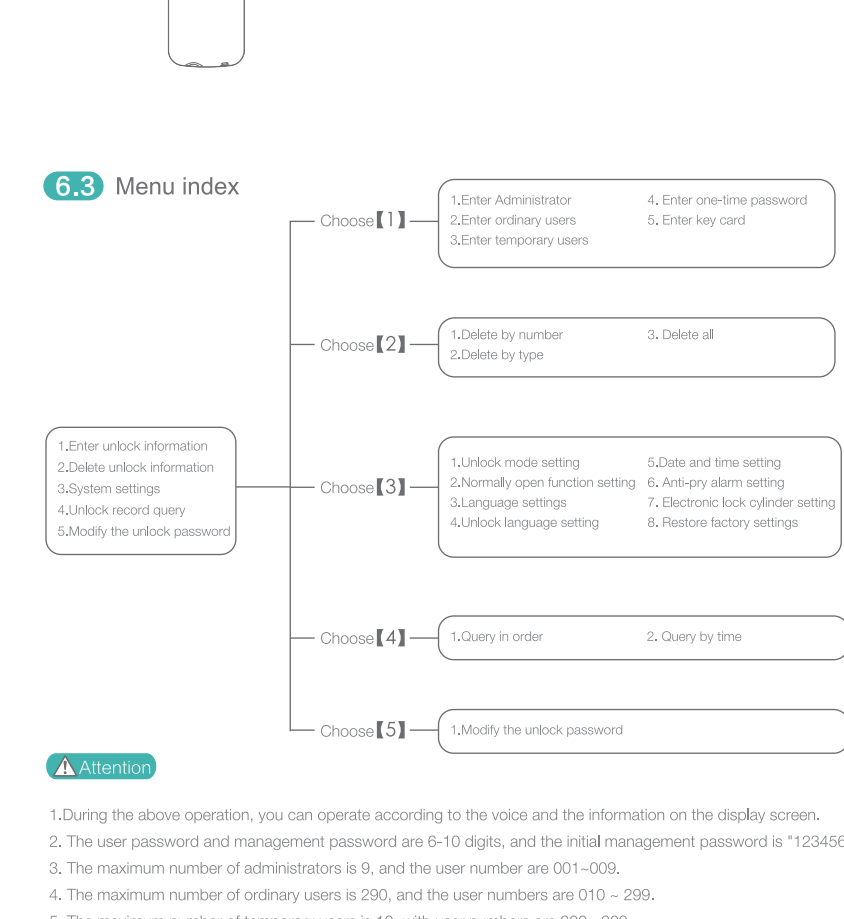
Working Temperature: -20°C~55°C  
Working Humidity: 15%~90%RH  
Input: 4.3V-6.5V (5# Alkaline Battery \*4)  
Standby Consumption: Static states50uA  
Battery Life: 2+year  
Fingerprint: A semiconductor living organism identification  
Material: Aluminum  
Lock Cylinder Type: Over B  
Way of Access: Password, Card, Key  
User Capacity: ≤300 (Fingerprints100, Passwords300, Cards300)  
Fingerprint Recognition Rate: FARs 0.001%, FRRs0.1%  
Password Length: 6-10  
Thickness Range of Door: 38-90mm  
Wireless Protocol: ZigBee (IEEE 802.15.4)  
Transmit Power : 20dBm  
Communication Distance: ≥300m (Open area)

### 3 Installation notice

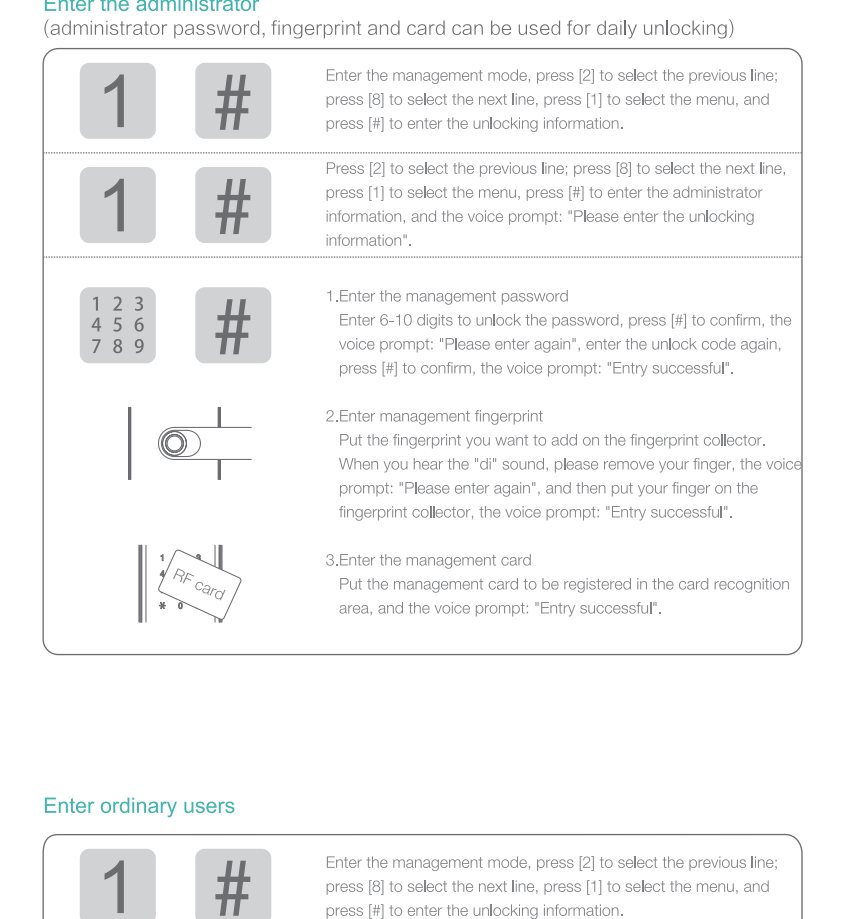
#### 3.1 Direction of opening



#### 3.2 Change handle direction



#### 3.3 Latch bolt reversal

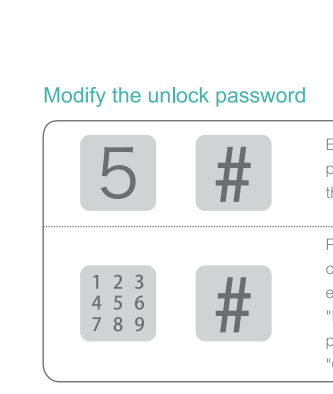


#### Attention

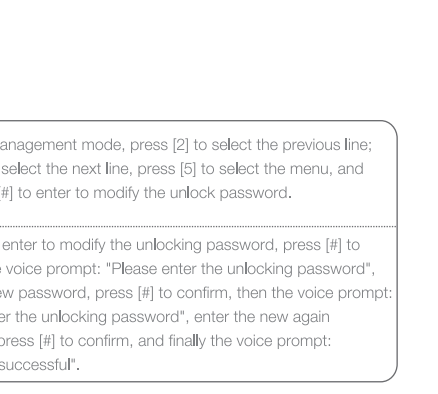
1.According to the thickness of the door, choose different specifications of accessory kits. 2.By default, the accessory package configured by the factory uses a door thickness of 38-90mm. If it is a door of other specifications, please contact us.

### 4 Installation instructions

#### 4.1 Put the lock body into the door frame processed according to the specified size.

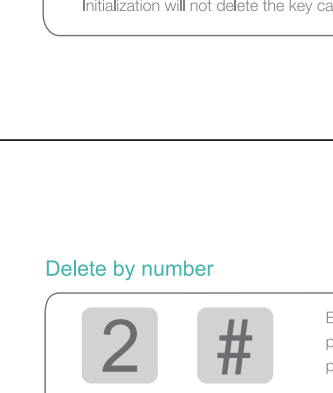


#### 4.2 Connect the TDG anti-theft spindles with the lock body.

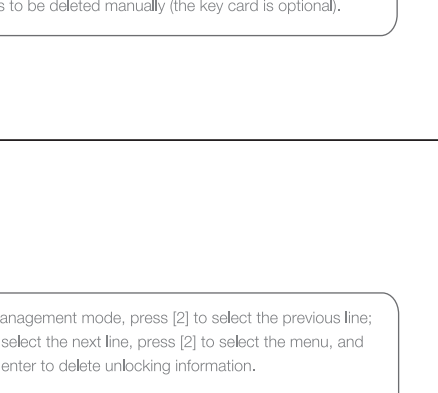


**Attention:** There is no such step when there is no TDG anti-theft spindles on the door.

#### 4.3 Fix the lock body with screws.

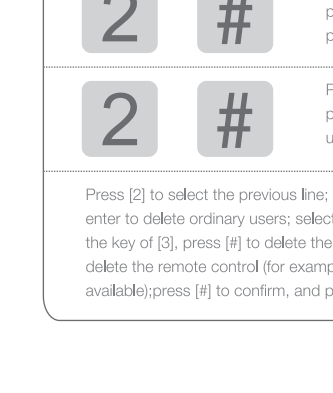


#### 4.4 Screw the threaded tubes on the stud on the lock body, and fix it with a self-open tamper switch.

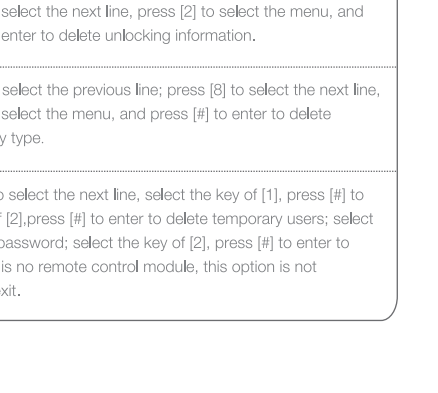


**Attention:** 1. When installing the spring square steel jammed inside of the door, and the length of the spring square steel should be adjusted to fit the door. 2. When the spring square steel is inserted into the door, choose the appropriate length of the spring square steel to fit the door.

#### 4.5 Place the connecting wire of the outer panel through over the line port, align the outer spring with the lock body and insert it, and keep the outer panel close to the outside of the door.

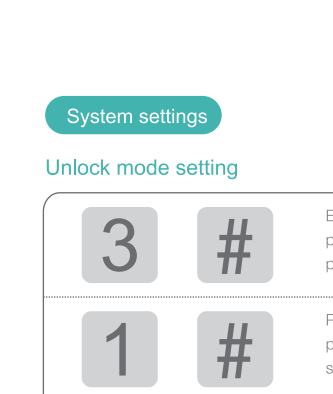


#### 4.6 Insert the outer panel connection wire and the inner panel connection wire, insert the knob paddle into the lock body and fix it with a self-open tamper switch.



**Attention:** During installation, the length of the knob paddle should not be too long, and the length of the knob paddle should be adjusted to fit the door. When the knob paddle is inserted into the door, choose the appropriate length of the knob paddle to fit the door.

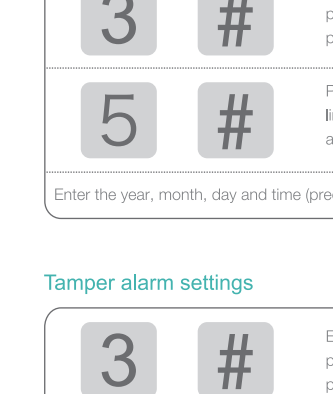
#### 4.7 Align the handle hole of the inner panel with the spring pin square axis, and insert the knob paddle with the knob paddle hole. The inner panel close to the door panel, and the inner panel and the outer panel are fixed and tightened with screws.



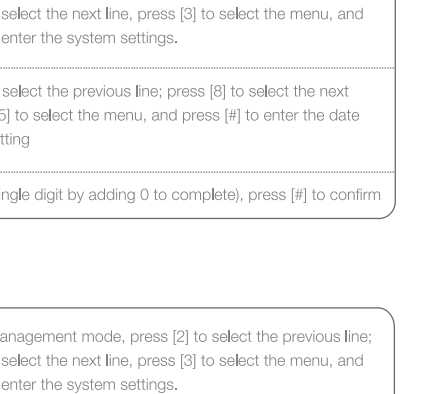
#### Attention

1. Choose the appropriate length of screws according to the thickness of the door. If the length of the screws is too long, it should be cut off appropriately to meet the installation size. 2. When the inner panel and outer panel are inserted into the door, they should be aligned with moderate force, and the door panel should be adjusted to about 2mm all over.

#### 4.8 Install the battery and close the battery.

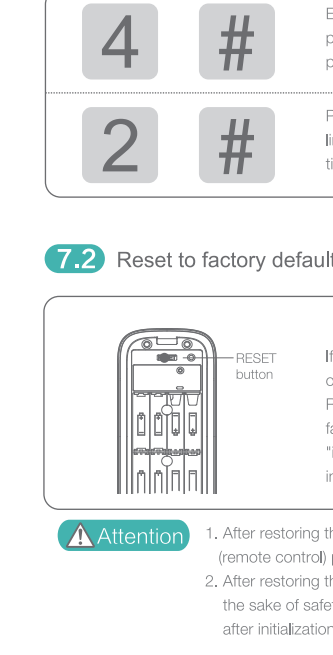


#### 4.9 Please check the handle from both sides of the door. If it is not smooth, check the handle from both sides of the door to confirm the door lock working properly.

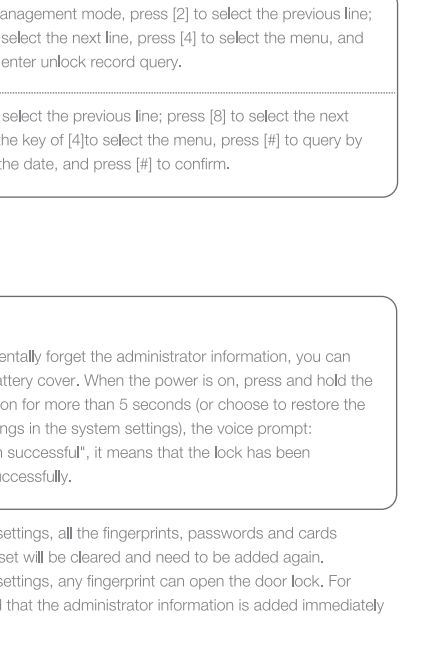


### 5 Instruction

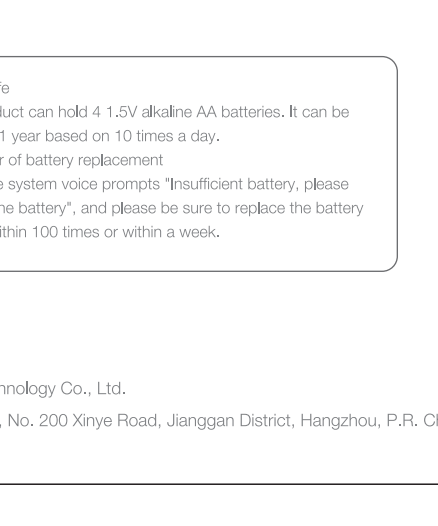
#### 5.1.1 Password to unlock



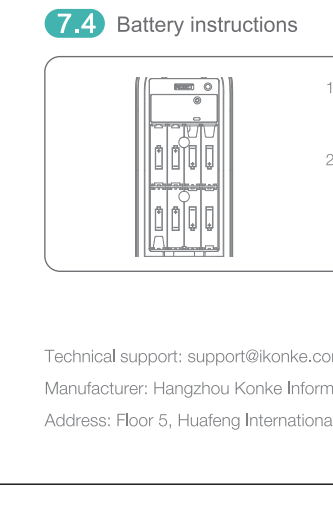
#### 5.1.2 Fingerprint to unlock



#### 5.1.3 Card to unlock



#### 5.2 Mechanical key to unlock



#### Attention

Just in case, do not put the mechanical key indoors or open the key box casually.

#### 5.3 Full-locked



#### 5.3.1 Outdoor

When outdoors, rotate the outdoor handle upwards.

#### 5.3.2 Indoor

When indoors, rotate the indoor handle upwards.

#### 5.3.3 Reverse locked

Rotate the knob to reverse lock. At this time, it cannot be opened normally from the outside and needs to be unlocked inside.

### 6 How to set up your smart lock

#### 6.1 How to network and remote control by APP

- Need to install the Korike APP and the host at the same time for network pairing.
- Open the inner panel and see the "RESET" button and the battery cover.
- Press the "RESET" button, the device is in networking mode when you hear the voice prompt to enter the administrator mode.
- Click add device in the APP, wait until the network is completed, and then you can remotely control the device.

#### 6.2 How to enter the management mode

Touch the outer cover, the keyboard indicator lights up. Press [1], and then press [4], the voice prompt: "Please enter the administrator information". Then enter the administrator password (the default password is "123456"), the administrator's fingerprint or the management card, and then press [4] to confirm, and then the voice prompt: "Operation is successful, please press the number to select the operation".

#### 6.3 Menu index



#### Attention

- During the above operation, you can operate according to the voice and the information on the display screen.
- The user password and management password are 6-10 digits, and the initial management password is "123456".
- The maximum number of administrators is 200, and the user number is 000-999.
- The maximum number of ordinary users is 200, and the user numbers are 010-299.
- The maximum number of temporary users is 10, with user numbers are 300-399.
- The number of one-time passwords is 1, and the user number is 999.
- In order to improve the function of the product, the manufacturer may modify the contents of the instruction manual. Please check the content of the user, and there will be no further notice at that time.

#### 6.3.1 User settings

##### User management

Enter the administrator (administrator password, fingerprint and card can be used for daily unlocking)



##### Enter ordinary users



##### Enter temporary users



##### Set the unlock time



##### Enter one-time password (Can only be used once and expires immediately)



##### Modify the unlock password



##### Enter key card



##### Delete by number



##### Delete by type



##### Delete all



##### System settings

##### Unlock mode setting



##### Normally open function



##### Language settings



##### Unlock voice settings



##### Time setting



##### Tamper alarm settings



#### Attention

When the tamper alarm function is opened, if the door lock is picked up or the screws are not fastened tightly, the door lock will sound an alarm.

### 7 Other functions

#### 7.1 Record query



#### Query by time



#### 7.2 Reset to factory default



#### Attention

- If you accidentally forget the administrator information, you can open the battery cover. When the power is on, press and hold the RESET button for more than 5 seconds (or choose to restore the factory settings in the system settings), the voice prompt: "Initialization successful", it means that the lock has been initialized successfully.
- After restoring the factory settings, all the fingerprints, passwords and cards (remote control) previously set will be deleted, and the system will be initialized.

#### 7.3 Emergency power supply method



#### Attention

When the battery power is lower than 4.8V, the system will give a voice prompt: "Insufficient power". Please replace the battery in time. If the system is still unable to unlock. At this time, please replace the battery in time. Do not mix different models, new and old batteries).

#### 7.4 Battery instructions



#### Attention

- This product can hold 4 3V alkaline AA batteries. It can be used for 1 year based on 10 times a day.
- Removal of battery instructions: When the battery power is insufficient, please replace the battery, and please be sure to replace the battery in time within 100 times or within a week.

#### Technical support: support@korike.com

Manufacturer: Hangzhou Korike Information Technology Co., Ltd.

Address: Floor 5, Huafeng International Mansion, No. 200 Xinye Road, Jianshan District, Hangzhou, P.R. China